



TELECOMMUNICATION:

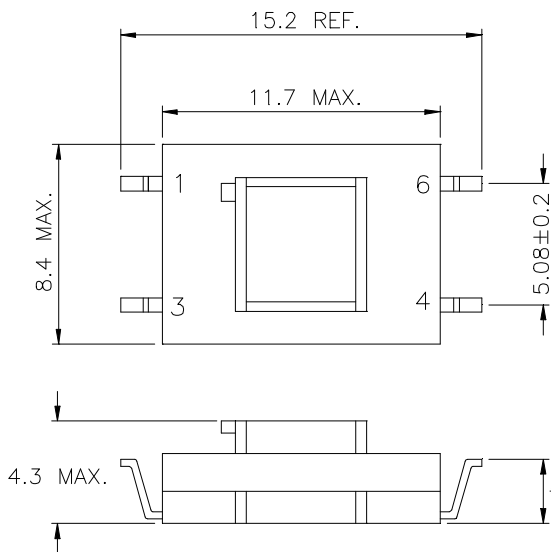
• MODEM Coupling Transformers for PCMCIA -applications

- Compatible with 56kb/s technologies
- Low Harmonic Distortion
- Flat Frequency / Phase Response

ELECTRICAL SPECIFICATIONS @ 25°C

SPECIFICATIONS		UT68408 / UT68409 / UT68412	UT68443A / UT68443B / UT68443
Reflects 600ohms at PRI with RL=		301Ω	290Ω
Turns Ratio (PRI.:SEC.)		1:1±2%	1:1±2%
D.C.Current in Pri.		none	none
Dielectric Test		1250Vac	1250Vac
Agency Approvals:			
D.C.Resistance	PRI.	150Ω±10%	141Ω±10%
	SEC.	150Ω±10%	171Ω±10%
Insertion Loss	@ 1KHz 0dBm.	3.3dB max.	3.5dB max.
Frequency Response	@ 300Hz to 3.5KHz , ref 1KHz	±0.15dB	±0.1dB
Return Loss *	@ 300Hz to 3.5KHz	25dB min.	30dB min.
Total Harmonic Distortion	@ 600Hz, -10dBm.	-80dB max.	-85dB typ.
Longitudinal Balance	@ 60Hz to 1KHz		60dB min.
	@ 200Hz to 1KHz	60dB min.	
	@ 1KHz to 4KHz	40dB min.	60dB min.

SCHEMATIC & DIMENSION : (UNIT : mm)

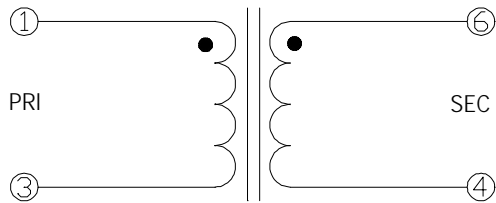


* See Terminal Offset Table

Terminal Offset

UM Part NO.	UT68408	UT68409	UT68412
Terminal Offset	-0.1mm	1.4mm	2.4mm

UM Part NO.	UT68443A	UT68443B	UT68443
Terminal Offset	-0.1mm	1.4mm	2.4mm



UT68408	UT68443A
UT68409	UT68443B
UT68412	UT68443

DATA SHEET 02-68 AUG./98
1 OF 3



UMEC Europe
Universal Microelectronics

UMEC elektronische Komponenten GmbH
Kreuzenstraße 80 • D-74076 Heilbronn
Tel. 07131/76170 • Fax 07131/761720

Internet: <http://www.umec-europe.com>
<http://www.umec-web.com>

e-mail: info@umec.de



TELECOMMUNICATION:

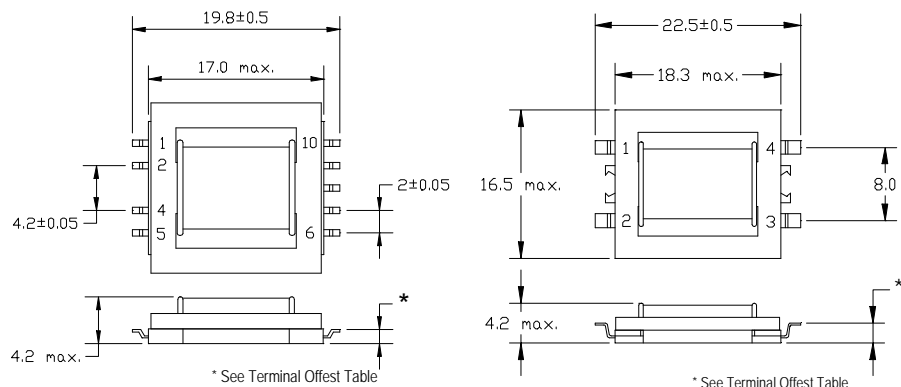
• MODEM Coupling Transformers for PCMCIA -applications

- Compatible with 56kb/s technologies
- Low Harmonic Distortion.
- Flat Frequency / Phase Response

ELECTRICAL SPECIFICATIONS @ 25°C

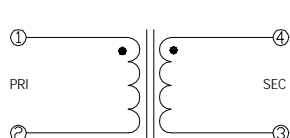
SPECIFICATIONS		UT68274A / UT68284	UT41660 / UT41660A / UT41660C
Reflects 600ohms at PRI with RL=		301Ω	301Ω
Turns Ratio (PRI.:SEC.)		1:1±2%	1:1±2%
D.C.Current in Pri.		none	None
Dielectric Test		1250Vac	1250Vac
Agency Approvals:			
D.C.Resistance	PRI.	160Ω±10%	150Ω±10%
	SEC.	145Ω±10%	150Ω±10%
Insertion Loss	@ 1KHz 0dBm.	3.15±0.1dB	3.0±0.21dB
Frequency Response	@ 70Hz to 20KHz , ref 1KHz		±0.2dB
	@ 200Hz to 10KHz , ref 1KHz		±0.1dB
	@ 300Hz to 4KHz , ref 1KHz	±0.1dB	
Return Loss *	@ 70Hz to 10KHz		25dB min.
	@ 200Hz to 4KHz		30dB min.
	@ 300Hz	34dB min.	
	@ 1KHz	40dB min.	
	@ 4KHz	34dB min.	
Total Harmonic Distortion	@ 150Hz, -3dBm.		-71dB max.
	@ 600Hz, -10dBm.	-83dB max.	-86dB max.
Longitudinal Balance	@ 200Hz to 1KHz	65dB min.	65dB min.
	@ 1KHz to 4KHz	65dB min.	65dB min.

SCHEMATIC & DIMENSION : (UNIT : mm)

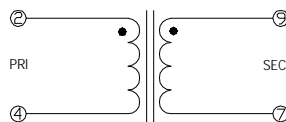


Terminal Offset		
UM P/N	UT68274A	UT68284
Terminal Offset	1.3mm	-0.1mm

UM P/N	UT41660	UT41660A	UT41660C
Terminal Offset	1.4mm	-0.1mm	2.4mm



UT68274A
UT68284



UT41660 UT41660A
UT41660C



UMEC Europe
Universal Microelectronics

UMEC elektronische Komponenten GmbH
Kreuzenstraße 80 • D-74076 Heilbronn
Tel. 07131/76170 • Fax 07131/761720

Internet: <http://www.umec-europe.com>
<http://www.umec-web.com>

e-mail: info@umec.de



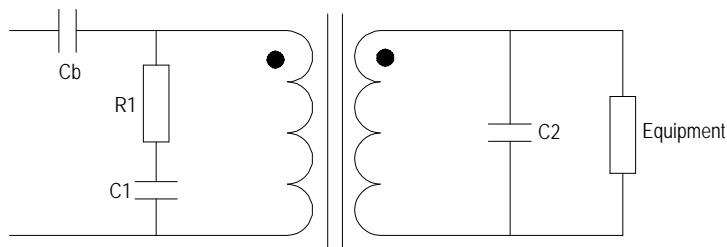
TELECOMMUNICATION:

- MODEM Coupling Transformers for PCMCIA -applications

RETURN LOSS TEST CIRCUITS

600ΩMATCH

Recommended Circuit Description:



UM Part No.	Ref. Impedance Values	Recommended Circuit Values				
		Cb (uF)	R1 (Ω)	C1 (nF)	C2 (nF)	Equipment (Ω)
UT41660	600Ω	22 uF				301Ω
UT41660A	600Ω	22 uF				301Ω
UT41660C	600Ω	22 uF				301Ω
UT68274A	600Ω					301Ω
UT68284	600Ω					301Ω
UT68408	600Ω					301Ω
UT68409	600Ω					301Ω
UT68412	600Ω					301Ω
UT68443	600Ω					290Ω
UT68443A	600Ω					290Ω
UT68443B	600Ω					290Ω

DATA SHEET 02-68 AUG./98
3 OF 3



UMEC Europe
Universal Microelectronics

UMEC elektronische Komponenten GmbH
Kreuzenstraße 80 • D-74076 Heilbronn
Tel. 07131/76170 • Fax 07131/761720

Internet: <http://www.umec-europe.com>
<http://www.umec-web.com>

e-mail: info@umec.de